

Chem-Impex International, Inc.

Tel: (630) 766-2112

E-mail: sales@chemimpex.com

Shipping and Correspondence:

935 Dillon Drive

Wood Dale, IL 60191

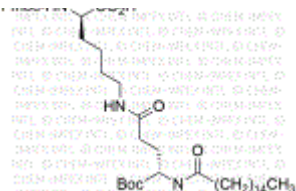
Fax: (630) 766-2218

Web site: www.chemimpex.com

Manufacturing site:

825 Dillon Drive

Wood Dale, IL 60191



Product Specifications

Catalogue Number	47731
Product	Fmoc-D-Lys(palmitoyl-Glu-OtBu)-OH Fmoc-D-Lys(Palm-Glu-OtBu)-OH
CAS Number	1491158-71-4
Molecular Formula	C ₄₆ H ₆₉ N ₃ O ₈
Molecular Weight	792.1

Appearance	White powder
Purity	≥ 98%
Application	It is used in solid-phase peptide synthesis to introduce Lysine D-isomer containing Liraglutide side-chain.
Storage	Store at 2 - 8 °C

For Laboratory Use Only