

Chem-Impex International, Inc.

Tel: (630) 766-2112

E-mail: sales@chemimpex.com

Shipping and Correspondence:

935 Dillon Drive

Wood Dale, IL 60191

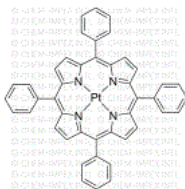
Fax: (630) 766-2218

Web site: www.chemimpex.com

Manufacturing site:

825 Dillon Drive

Wood Dale, IL 60191



Product Specifications

Catalogue Number	47347
Product	Platinum(II) 5,10,15,20-(tetraphenyl) Platinum(II) <i>meso</i> -tetraphenylporphine
CAS Number	14187-14-5
Molecular Formula	C ₄₄ H ₂₈ N ₄ Pt
Molecular Weight	807.80

Appearance	Purple solid
Melting Point	> 250 °C
Purity	≥ 98%
Storage	Store at RT

For Laboratory Use Only