

Chem-Impex International, Inc.

Tel: (630) 766-2112

E-mail: sales@chemimpex.com

Shipping and Correspondence:

935 Dillon Drive

Wood Dale, IL 60191

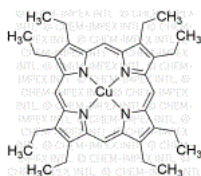
Fax: (630) 766-2218

Web site: www.chemimpex.com

Manufacturing site:

825 Dillon Drive

Wood Dale, IL 60191



Product Specifications

Catalogue Number	47338
Product	Copper(II) 2,3,7,8,12,13,17,18-(octaethyl) Copper(II) octaethylporphine
CAS Number	14409-63-3
Molecular Formula	C ₃₆ H ₄₄ CuN ₄
Molecular Weight	596.31

Appearance	Purple solid
Melting Point	> 250 °C
Purity	≥ 98%
Storage	Store at RT

For Laboratory Use Only