

Chem-Impex International, Inc.

Tel: (630) 766-2112

E-mail: sales@chemimpex.com

Shipping and Correspondence:

935 Dillon Drive

Wood Dale, IL 60191

Fax: (630) 766-2218

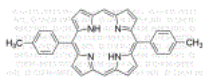
Web site: www.chemimpex.com

Manufacturing site:

825 Dillon Drive

Wood Dale, IL 60191

Product Specifications



Catalogue Number	47326
Product	5,15-(di-<i>p</i>-Tolyl)porphyrin 5,15-Bis(4-methylphenyl)porphine
CAS Number	128374-05-0
Molecular Formula	C ₃₄ H ₂₆ N ₄
Molecular Weight	490.60

Appearance	Purple solid
Melting Point	> 200 °C
¹H NMR	Conforms to structure
Purity	≥ 98%
Storage	Store at RT

For Laboratory Use Only