

Chem-Impex International, Inc.

Tel: (630) 766-2112

E-mail: sales@chemimpex.com

Shipping and Correspondence:

935 Dillon Drive

Wood Dale, IL 60191

Fax: (630) 766-2218

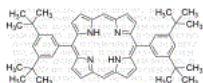
Web site: www.chemimpex.com

Manufacturing site:

825 Dillon Drive

Wood Dale, IL 60191

Product Specifications



Catalogue Number	47320
Product	5,15-(di-3,5-di-<i>tert</i>-Butylphenyl)porphyrin 5,15-Bis(3,5-di- <i>tert</i> -butylphenyl)porphine
CAS Number	173613-63-3
Molecular Formula	C ₄₈ H ₅₄ N ₄
Molecular Weight	686.97

Appearance	Purple solid
Melting Point	> 250 °C
¹H NMR	Conforms to structure
Purity	≥ 98%
Storage	Store at RT

For Laboratory Use Only