

Chem-Impex International, Inc.

Tel: (630) 766-2112

E-mail: sales@chemimpex.com

Shipping and Correspondence:

935 Dillon Drive

Wood Dale, IL 60191

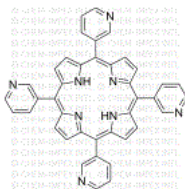
Fax: (630) 766-2218

Web site: www.chemimpex.com

Manufacturing site:

825 Dillon Drive

Wood Dale, IL 60191



Product Specifications

Catalogue Number	47319
Product	5,10,15,20-(Tetra-3-pyridyl)porphyrin <i>meso</i> -Tetra(3-pyridyl)porphine
CAS Number	40882-83-5
Molecular Formula	C ₄₀ H ₂₆ N ₈
Molecular Weight	618.69

Appearance	Purple solid
Melting Point	> 250 °C
Purity	≥ 98%
Storage	Store at RT

For Laboratory Use Only