

# Chem-Impex International, Inc.

---

**Tel: (630) 766-2112**

**E-mail: sales@chemimpex.com**

**Shipping and Correspondence:**

935 Dillon Drive

Wood Dale, IL 60191

**Fax: (630) 766-2218**

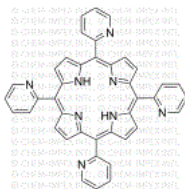
**Web site: www.chemimpex.com**

**Manufacturing site:**

825 Dillon Drive

Wood Dale, IL 60191

---



## Product Specifications

<b>Catalogue Number</b>	47318
<b>Product</b>	<b>5,10,15,20-(Tetra-2-pyridyl)porphyrin</b> <i>meso</i> -Tetra(2-pyridyl)porphine
<b>CAS Number</b>	40904-90-3
<b>Molecular Formula</b>	C <sub>40</sub> H <sub>26</sub> N <sub>8</sub>
<b>Molecular Weight</b>	618.69

---

<b>Appearance</b>	Purple solid
<b>Melting Point</b>	> 250 °C
<b>Purity</b>	≥ 98%
<b>Storage</b>	Store at RT

**For Laboratory Use Only**