

Chem-Impex International, Inc.

Tel: (630) 766-2112

E-mail: sales@chemimpex.com

Shipping and Correspondence:

935 Dillon Drive

Wood Dale, IL 60191

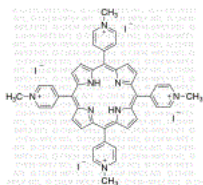
Fax: (630) 766-2218

Web site: www.chemimpex.com

Manufacturing site:

825 Dillon Drive

Wood Dale, IL 60191



Product Specifications

Catalogue Number	47315
Product	5,10,15,20-(Tetra-N-methyl-4-pyridyl)porphyrin tetraiodide <i>meso</i> -Tetra(<i>N</i> -methyl-4-pyridyl)porphine tetraiodide TMPyP • 4I
CAS Number	36674-90-5
Molecular Formula	C ₄₄ H ₃₈ I ₄ N ₈
Molecular Weight	1186.44

Appearance	Purple solid
Melting Point	> 250 °C
¹H NMR	Conforms to structure
Purity	≥ 98%
Storage	Store at RT

For Laboratory Use Only