

Chem-Impex International, Inc.

Tel: (630) 766-2112

E-mail: sales@chemimpex.com

Shipping and Correspondence:

935 Dillon Drive

Wood Dale, IL 60191

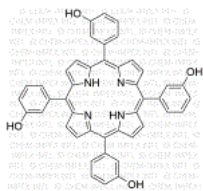
Fax: (630) 766-2218

Web site: www.chemimpex.com

Manufacturing site:

825 Dillon Drive

Wood Dale, IL 60191



Product Specifications

Catalogue Number	47313
Product	5,10,15,20-(Tetra-3-hydroxyphenyl)porphyrin <i>meso</i> -Tetra(3-hydroxyphenyl)porphine <i>meso</i> -THPP
CAS Number	22112-79-4
Molecular Formula	C ₄₄ H ₃₀ N ₄ O ₄
Molecular Weight	678.73

Appearance	Purple solid
Melting Point	> 320 °C
¹H NMR	Conforms to structure
Purity	≥ 98%
Storage	Store at RT

For Laboratory Use Only