

# Chem-Impex International, Inc.

Tel: (630) 766-2112

E-mail: sales@chemimpex.com

Shipping and Correspondence:

935 Dillon Drive

Wood Dale, IL 60191

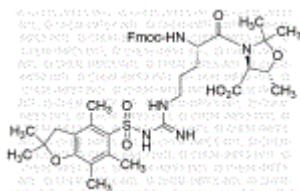
Fax: (630) 766-2218

Web site: www.chemimpex.com

Manufacturing site:

825 Dillon Drive

Wood Dale, IL 60191



## Product Specifications

Catalogue Number	46592
Product	<b>Fmoc-Arg(Pbf)-Thr(Psi(Me,Me)pro)-OH</b>
Molecular Formula	C <sub>41</sub> H <sub>51</sub> N <sub>5</sub> O <sub>9</sub> S
Molecular Weight	789.93

Appearance	White to off-white powder
Solubility	Clear, colorless to slightly colored solution (1 mmole in 2 mL DMF)
Other Enantiomer	D-Arg : ≤ 0.2% Sum of other Thr isomers : ≤ 0.5% D-Thr : ≤ 0.2% L-allo-Thr : ≤ 0.2% D-allo-Thr : ≤ 0.2%
Purity by HPLC	≥ 97%
Purity by TLC	≥ 97%
Storage	Store at 2 - 8 °C

**For Laboratory Use Only**