

# Chem-Impex International, Inc.

---

Tel: (630) 766-2112

E-mail: sales@chemimpex.com

Shipping and Correspondence:

935 Dillon Drive

Wood Dale, IL 60191

Fax: (630) 766-2218

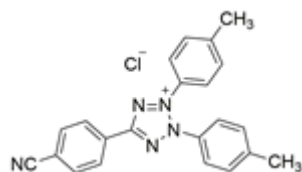
Web site: www.chemimpex.com

Manufacturing site:

825 Dillon Drive

Wood Dale, IL 60191

---



## Product Specifications

Catalogue Number	44006
Product	<b>2,3-Bis(4-methylphenyl)-5-(4-cyanophenyl)</b>
CAS Number	376591-03-6
Molecular Formula	C <sub>22</sub> H <sub>18</sub> ClN <sub>5</sub>
Molecular Weight	387.87

---

Warnings	<i>Light sensitive!</i>
Appearance	White to light yellow crystal powder
Assay by titration	≥ 95%
Purity by HPLC	≥ 95%
Storage	Store at RT

**For Laboratory Use Only**