

Chem-Impex International, Inc.

Tel: (630) 766-2112

E-mail: sales@chemimpex.com

Shipping and Correspondence:

935 Dillon Drive

Wood Dale, IL 60191

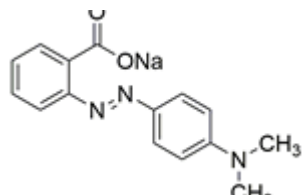
Fax: (630) 766-2218

Web site: www.chemimpex.com

Manufacturing site:

825 Dillon Drive

Wood Dale, IL 60191



Product Specifications

Catalogue Number	42518
Product	Methyl red sodium salt 4-Dimethylaminoazobenzene-2'-carboxylic acid sodium salt Acid red 2
CAS Number	845-10-3
Molecular Formula	C ₁₅ H ₁₄ N ₃ NaO ₂
Molecular Weight	291.28

Appearance	Red to brownish yellow powder
Clarity & Color	Clarity of alcohol solution : To pass test Clarity of aqueous solution : To pass test
Melting Point	179 - 182 °C
Visual Transition Range	pH 4.2 (Pink) to pH 6.2 (Yellow)
Storage	Store at RT

For Laboratory Use Only