

# Chem-Impex International, Inc.

---

**Tel:** (630) 766-2112

**E-mail:** sales@chemimpex.com

**Shipping and Correspondence:**

935 Dillon Drive

Wood Dale, IL 60191

**Fax:** (630) 766-2218

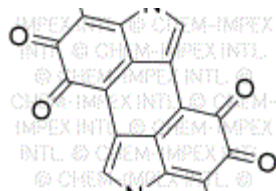
**Web site:** www.chemimpex.com

**Manufacturing site:**

825 Dillon Drive

Wood Dale, IL 60191

---



## Product Specifications

<b>Catalogue Number</b>	42515
<b>Product</b>	<b>Melanin</b>
<b>CAS Number</b>	8049-97-6

---

<b>Appearance</b>	Brown, dark brown or black powder
<b>Solubility</b>	Clear, dark brown or black solution (2% in 1M ammonia)
<b>Elemental Analysis (Theory)</b>	Carbon (C) : 44 - 56% Nitrogen (N) : 6.0 - 7.5% Hydrogen (H) : 2 - 3%
<b>Residue On Ignition</b>	≤ 5%
<b>Storage</b>	Store at ≤ -10 °C

**For Laboratory Use Only**