

# Chem-Impex International, Inc.

---

**Tel:** (630) 766-2112

**E-mail:** sales@chemimpex.com

**Shipping and Correspondence:**

935 Dillon Drive

Wood Dale, IL 60191

**Fax:** (630) 766-2218

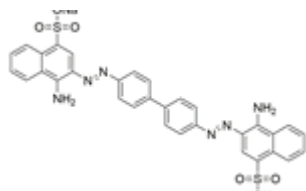
**Web site:** www.chemimpex.com

**Manufacturing site:**

825 Dillon Drive

Wood Dale, IL 60191

---



## Product Specifications

<b>Catalogue Number</b>	42504
<b>Product</b>	<b>Congo red</b> Congo red 4B Cosmos red
<b>CAS Number</b>	573-58-0
<b>Molecular Formula</b>	C <sub>32</sub> H <sub>22</sub> N <sub>6</sub> Na <sub>2</sub> O <sub>6</sub> S <sub>2</sub>
<b>Molecular Weight</b>	696.66

---

<b>Appearance</b>	Red powder
<b>Clarity &amp; Color</b>	To pass test
<b>Solubility</b>	Soluble in water
<b>Visual Transition Range</b>	pH 3.0 (blue) to pH 5.2 (red)
<b>Loss on Drying</b>	≤ 3%
<b>Grade</b>	Certifiable Grade
<b>Storage</b>	Store at RT

**For Laboratory Use Only**