

# Chem-Impex International, Inc.

---

**Tel:** (630) 766-2112

**E-mail:** sales@chemimpex.com

**Shipping and Correspondence:**

935 Dillon Drive

Wood Dale, IL 60191

**Fax:** (630) 766-2218

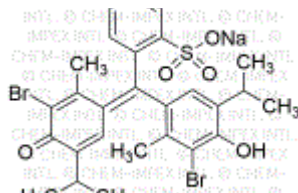
**Web site:** www.chemimpex.com

**Manufacturing site:**

825 Dillon Drive

Wood Dale, IL 60191

---



## Product Specifications

<b>Catalogue Number</b>	42498
<b>Product</b>	<b>Bromothymol blue sodium salt</b> 3',3''-Dibromothymolsulfonephthalein sodium salt
<b>CAS Number</b>	34722-90-2
<b>Molecular Formula</b>	C <sub>27</sub> H <sub>27</sub> Br <sub>2</sub> NaO <sub>5</sub> S
<b>Molecular Weight</b>	646.36

---

<b>Appearance</b>	Green or cream colored powder
<b>Clarity &amp; Color</b>	Clarity : To pass test
<b>Solubility</b>	Sparingly soluble in water
<b>Melting Point</b>	200 - 202 °C
<b>Visual Transition Range</b>	From pH 6.0 (Yellow) to pH 7.6 (Blue)
<b>Storage</b>	Store at RT

**For Laboratory Use Only**