

# Chem-Impex International, Inc.

---

**Tel:** (630) 766-2112

**E-mail:** sales@chemimpex.com

**Shipping and Correspondence:**

935 Dillon Drive

Wood Dale, IL 60191

**Fax:** (630) 766-2218

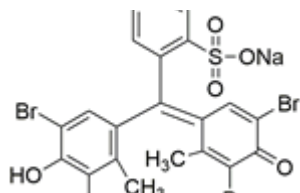
**Web site:** www.chemimpex.com

**Manufacturing site:**

825 Dillon Drive

Wood Dale, IL 60191

---



## Product Specifications

<b>Catalogue Number</b>	42493
<b>Product</b>	<b>Bromocresol green sodium salt solution (0.04)</b> 3',3'',5',5''-Tetrabromo- <i>m</i> -cresolsulfonephthalein sodium salt
<b>CAS Number</b>	62625-32-5
<b>Molecular Formula</b>	C <sub>21</sub> H <sub>13</sub> Br <sub>4</sub> NaO <sub>5</sub> S
<b>Molecular Weight</b>	720

---

<b>Appearance</b>	Dark brown to dark red liquid
<b>Clarity &amp; Color</b>	To pass test
<b>Visual Transition Range</b>	From pH 3.8 (yellow) to pH 5.4 (blue)
<b>Storage</b>	Store at RT

**For Laboratory Use Only**