

Chem-Impex International, Inc.

Tel: (630) 766-2112

E-mail: sales@chemimpex.com

Shipping and Correspondence:

935 Dillon Drive

Wood Dale, IL 60191

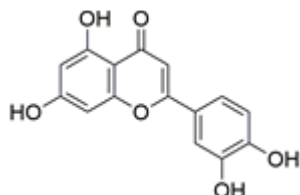
Fax: (630) 766-2218

Web site: www.chemimpex.com

Manufacturing site:

825 Dillon Drive

Wood Dale, IL 60191



Product Specifications

Catalogue Number	42437
Product	3',4',5,7-Tetrahydroxyflavone Luteolin
CAS Number	491-70-3
Molecular Formula	C ₁₅ H ₁₀ O ₆
Molecular Weight	286.24

Appearance	Yellow-green fine powder
Odor	Characteristic odor
Melting Point	328 - 330 °C
Heavy Metals	≤ 10 ppm
Cation	Arsenic (As) : ≤ 1 ppm Lead (Pb) : ≤ 1 ppm Mercury (Hg) : ≤ 0.5 ppm
Water Content (Karl Fisher)	≤ 2%
Yeast and Mold	≤ 100 cfu/g
Residual Solvents	Not detected
Solvent	Methanol and Water
E. Coli	Negative
Microbial Count	≤ 1000 cfu/g (TPC)
Salmonella	Negative
Particle Size	≥ 98% pass through 80 mesh
Ash	≤ 2%
Purity by HPLC	≥ 98%
Storage	Store at 2 - 8 °C
Additional Information	Taste : Characteristic taste Pesticide residue : 666 : ≤ 0.2 ppm DDT : ≤ 0.2 ppm

Product Specifications

Catalog Number: 42437

For Laboratory Use Only