

Chem-Impex International, Inc.

Tel: (630) 766-2112

E-mail: sales@chemimpex.com

Shipping and Correspondence:

935 Dillon Drive

Wood Dale, IL 60191

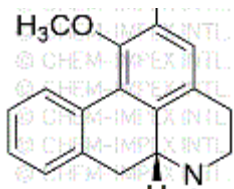
Fax: (630) 766-2218

Web site: www.chemimpex.com

Manufacturing site:

825 Dillon Drive

Wood Dale, IL 60191



Product Specifications

Catalogue Number	42423
Product	Nuciferine 1,2-Dimethoxy-6 α β -aporphine (<i>R</i>)-1,2-Dimethoxy-6-methyl-5,6,6a,7-tetrahydro-4 <i>H</i> -dibenzo[de,g]
CAS Number	475-83-2
Molecular Formula	C ₁₉ H ₂₁ NO ₂
Molecular Weight	295.38

Appearance	Off-white powder
Odor	Characteristic odor
Cation	Arsenic (As) : ≤ 2 ppm Lead (Pb) : ≤ 2 ppm Mercury (Hg) : ≤ 0.1 ppm Cadmium (Cd) : ≤ 1 ppm
Yeast and Mold	≤ 100 cfu/g
Loss on Drying	$\leq 5\%$
Residual Solvents	Ethanol : ≤ 5000 ppm
Coliform Organisms	Not detected
E. Coli	Not detected per gram
Microbial Count	≤ 1000 cfu/g (TPC)
Salmonella	Not detected per 25 g
Staphylococcus Aureus	Not detected per 25 g
Particle Size	100% pass through 80 mesh
Purity by HPLC	$\geq 98\%$
Storage	Store at 2 - 8 °C
Additional Information	Taste : Characteristic taste

Product Specifications

Catalog Number: 42423

For Laboratory Use Only