

Chem-Impex International, Inc.

Tel: (630) 766-2112

E-mail: sales@chemimpex.com

Shipping and Correspondence:

935 Dillon Drive

Wood Dale, IL 60191

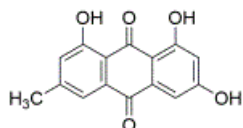
Fax: (630) 766-2218

Web site: www.chemimpex.com

Manufacturing site:

825 Dillon Drive

Wood Dale, IL 60191



Product Specifications

Catalogue Number	42410
Product	Emodin 1,3,8-Trihydroxy-6-methylanthraquinone
CAS Number	518-82-1
Molecular Formula	C ₁₅ H ₁₀ O ₅
Molecular Weight	270.24

Appearance	Yellow fine powder
Odor	Characteristic
Melting Point	253 °C (dec.)
Heavy Metals	≤ 10 ppm
Cation	Lead (Pb) : ≤ 0.5 ppm Arsenic (As) : ≤ 1 ppm
Yeast and Mold	≤ 100 cfu/g
Loss on Drying	≤ 5%
Residual Solvents	≤ 0.05 ppm
E. Coli	Negative
Microbial Count	≤ 1000 cfu/g (TPC)
Salmonella	Negative
Particle Size	≥ 99% pass thr' 80 mesh
Ash	≤ 2%
Purity by HPLC	≥ 95%
Grade	Meets USP Specification
Storage	Store at 2 - 8 °C

For Laboratory Use Only