

Chem-Impex International, Inc.

Tel: (630) 766-2112

E-mail: sales@chemimpex.com

Shipping and Correspondence:

935 Dillon Drive

Wood Dale, IL 60191

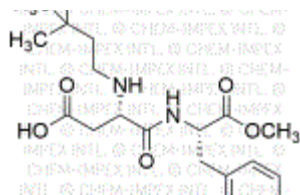
Fax: (630) 766-2218

Web site: www.chemimpex.com

Manufacturing site:

825 Dillon Drive

Wood Dale, IL 60191



Product Specifications

Catalogue Number	42204
Product	Neotame <i>N</i> -[<i>N</i> -(3,3-dimethylbutyl)- <i>L</i> -α-aspartyl]- <i>L</i> -phenylalanine 1-methyl ester
CAS Number	165450-17-9
Molecular Formula	C ₂₀ H ₃₀ N ₂ O ₅
Molecular Weight	378.47

Appearance	White to off-white powder
Melting Point	82 - 86 °C
Optical Rotation	[α] _D ²⁰ = -36 to -42 ° (C=0.5 in Water)
Infrared Spectrum	Conforms to structure
Analysis by Mass Spectra	Conforms to standard
¹H NMR	Conforms to structure
Purity by HPLC	≥ 98%
Storage	Store at 0 - 8 °C

For Laboratory Use Only