

Chem-Impex International, Inc.

Tel: (630) 766-2112

E-mail: sales@chemimpex.com

Shipping and Correspondence:

935 Dillon Drive

Wood Dale, IL 60191

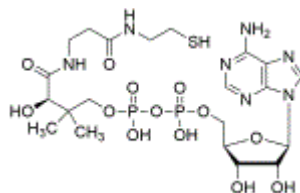
Fax: (630) 766-2218

Web site: www.chemimpex.com

Manufacturing site:

825 Dillon Drive

Wood Dale, IL 60191



Product Specifications

Catalogue Number	42141
Product	3'-Desphosphocoenzyme A 3'-Desphosphocoenzyme A dpCoA
CAS Number	3633-59-8
Molecular Formula	C ₂₁ H ₃₅ N ₇ O ₁₃ P ₂ S
Molecular Weight	687.55

Appearance	White to off-white powder
Purity by HPLC	≥ 90%
Storage	Store at ≤ -10 °C

For Laboratory Use Only