

# Chem-Impex International, Inc.

---

**Tel:** (630) 766-2112

**E-mail:** sales@chemimpex.com

**Shipping and Correspondence:**

935 Dillon Drive

Wood Dale, IL 60191

**Fax:** (630) 766-2218

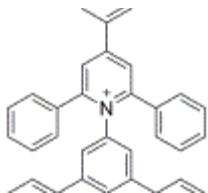
**Web site:** www.chemimpex.com

**Manufacturing site:**

825 Dillon Drive

Wood Dale, IL 60191

---



## Product Specifications

<b>Catalogue Number</b>	42043
<b>Product</b>	<b>Reichardt's dye</b> 2,6-Diphenyl-4-(2,4,6-triphenyl-1-pyridinio)phenolate 2,6-Diphenyl-4-(2,4,6-triphenylpyridinio)phenolate
<b>CAS Number</b>	10081-39-7
<b>Molecular Formula</b>	C <sub>41</sub> H <sub>29</sub> NO
<b>Molecular Weight</b>	551.68

---

<b>Appearance</b>	Dark blue to black powder
<b>Elemental Analysis (Found)</b>	C = 79.4 to 99.1%, N = 2.1 to 2.8%
<b>Infrared Spectrum</b>	Conforms to reference
<b><sup>13</sup>C NMR</b>	Conforms to structure
<b><sup>1</sup>H NMR</b>	Conforms to structure
<b>Purity</b>	≥ 95% (NMR)
<b>Grade</b>	suitable for Hematology & Histology
<b>Storage</b>	Store at RT

**For Laboratory Use Only**