

Chem-Impex International, Inc.

Tel: (630) 766-2112

E-mail: sales@chemimpex.com

Shipping and Correspondence:

935 Dillon Drive

Wood Dale, IL 60191

Fax: (630) 766-2218

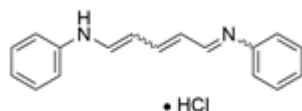
Web site: www.chemimpex.com

Manufacturing site:

825 Dillon Drive

Wood Dale, IL 60191

Product Specifications



Catalogue Number	42013
Product	<i>N</i>-[5-(Phenylamino)-2,4-pentadienylidene]
CAS Number	1497-49-0
Molecular Formula	C ₁₇ H ₁₆ N ₂ •HCl
Molecular Weight	284.78

Appearance	Dark red to red to dark purple crystalline powder
Loss on Drying	≤ 0.5%
Assay by titration	≥ 97%
Grade	suitable for Hematology & Histology
Storage	Store at RT

For Laboratory Use Only