

Chem-Impex International, Inc.

Tel: (630) 766-2112

E-mail: sales@chemimpex.com

Shipping and Correspondence:

935 Dillon Drive

Wood Dale, IL 60191

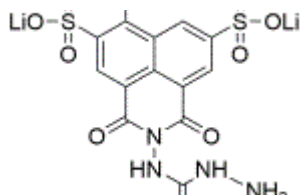
Fax: (630) 766-2218

Web site: www.chemimpex.com

Manufacturing site:

825 Dillon Drive

Wood Dale, IL 60191



Product Specifications

Catalogue Number	41991
Product	Lucifer Yellow CH dilithium salt 6-Amino-2,3-dihydro-1,3-dioxo-2-hydrazinocarbonylamino-1H-
CAS Number	67769-47-5
Molecular Formula	C ₁₃ H ₉ Li ₂ N ₅ O ₉ S ₂
Molecular Weight	457.25

Appearance	Orange solid
Solubility	Soluble in water
UV Ratios	Absorption of spectrum : λ (H ₂ O) : 428 ± 3 nm $e \lambda_{max}$: ≥ 11000
Purity by HPLC	≥ 95%
Grade	suitable for Hematology & Histology
Storage	Store at 0 - 8 °C

For Laboratory Use Only