

Chem-Impex International, Inc.

Tel: (630) 766-2112

E-mail: sales@chemimpex.com

Shipping and Correspondence:

935 Dillon Drive

Wood Dale, IL 60191

Fax: (630) 766-2218

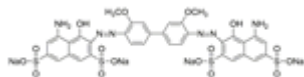
Web site: www.chemimpex.com

Manufacturing site:

825 Dillon Drive

Wood Dale, IL 60191

Product Specifications



Catalogue Number	41952
Product	Direct Blue 15
CAS Number	2429-74-5
Molecular Formula	C ₃₄ H ₂₄ N ₆ Na ₄ O ₁₆ S ₄
Molecular Weight	992.8

Appearance	Dark blue powder
Solubility	Very dark blue solution at 10 mg plus 1 mL of water
Elemental Analysis (Theory)	Carbon : 22.4 ± 0.5 % and Nitrogen : 4 ± 0.5%
Infrared Spectrum	Conforms to structure
Dye content	≥ 40%
Storage	Store at RT

For Laboratory Use Only