

Chem-Impex International, Inc.

Tel: (630) 766-2112

E-mail: sales@chemimpex.com

Shipping and Correspondence:

935 Dillon Drive

Wood Dale, IL 60191

Fax: (630) 766-2218

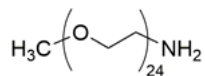
Web site: www.chemimpex.com

Manufacturing site:

825 Dillon Drive

Wood Dale, IL 60191

Product Specifications



Catalogue Number	41720
Product	Methyl-PEG₂₄-amine mPEG ₂₄ -Amine 2,5,8,11,14,17,20,23,26,29,32,35,38,41,44,47,50,53,56,59,62,65,68,71-Tetracosaoxatriheptacontan-73-amine
CAS Number	2151823-08-2 , 32130-27-1
Molecular Formula	C ₄₉ H ₁₀₁ NO ₂₄
Molecular Weight	1088.33

Appearance	White solid or powder
Analysis by Mass Spectra	Conforms to standard
¹H NMR	Conforms to structure
Purity by HPLC	≥ 97.5% (ELSD)
Purity by TLC	Single Spot
Storage	Store at ≤ -10 °C

For Laboratory Use Only