

Chem-Impex International, Inc.

Tel: (630) 766-2112

E-mail: sales@chemimpex.com

Shipping and Correspondence:

935 Dillon Drive

Wood Dale, IL 60191

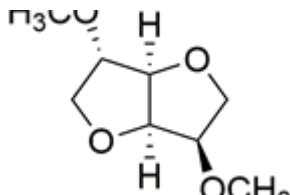
Fax: (630) 766-2218

Web site: www.chemimpex.com

Manufacturing site:

825 Dillon Drive

Wood Dale, IL 60191



Product Specifications

Catalogue Number	41647
Product	Isosorbide dimethyl ether 1,4:3,6-Dianhydro-2,5-di-O-methyl-D-glucitol 1,4:3,6-Dianhydrosorbitol 2,5-dimethyl ether
CAS Number	5306-85-4
Molecular Formula	C ₈ H ₁₄ O ₄
Molecular Weight	174.2

Appearance	Clear colorless liquid
Specific Gravity	1.15 - 1.17
Refractive Index	n ²⁰ _D 1.450 - 1.470
Heavy Metals	≤ 10 ppm
Water Content (Karl Fisher)	≤ 1%
Acid value	≤ 1.5 mgKOH/g
Purity by GC	≥ 98%
Storage	Store at RT

For Laboratory Use Only