

Chem-Impex International, Inc.

Tel: (630) 766-2112

E-mail: sales@chemimpex.com

Shipping and Correspondence:

935 Dillon Drive

Wood Dale, IL 60191

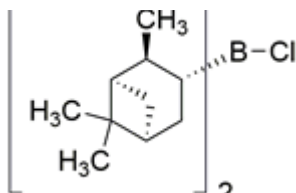
Fax: (630) 766-2218

Web site: www.chemimpex.com

Manufacturing site:

825 Dillon Drive

Wood Dale, IL 60191



Product Specifications

Catalogue Number	41436
Product	(-)-B-Chlorodiisopinocampheylborane (60% in
CAS Number	85116-37-6
Molecular Formula	C ₂₀ H ₃₄ BCl
Molecular Weight	320.75

Appearance	Colorless to yellow liquid
Assay by titration	≥ 60%
Storage	Store at 2 - 8 °C

For Laboratory Use Only