

Chem-Impex International, Inc.

Tel: (630) 766-2112

E-mail: sales@chemimpex.com

Shipping and Correspondence:

935 Dillon Drive

Wood Dale, IL 60191

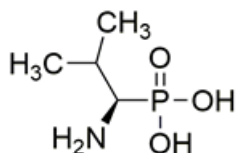
Fax: (630) 766-2218

Web site: www.chemimpex.com

Manufacturing site:

825 Dillon Drive

Wood Dale, IL 60191



Product Specifications

Catalogue Number	41409
Product	(1R)-(+)-(1-Amino-2-methylpropyl) (R)-1-Amino(2-methylpropyl)phosphonic acid [(1R)-1-Amino-2-methylpropyl]phosphonic acid
CAS Number	66254-56-6
Molecular Formula	C ₄ H ₁₂ NO ₃ P
Molecular Weight	153.12
Melting Point	272 - 277 °C
Optical Rotation	[α] ²⁰ _D = 1.0 ± 0.5 ° (C = 1 in 1 M NaOH)
Assay	≥ 98%
Storage	Store at RT

For Laboratory Use Only