

# Chem-Impex International, Inc.

---

**Tel:** (630) 766-2112

**E-mail:** sales@chemimpex.com

**Shipping and Correspondence:**

935 Dillon Drive

Wood Dale, IL 60191

**Fax:** (630) 766-2218

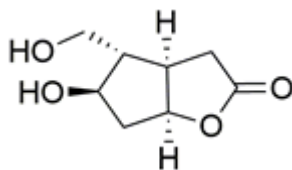
**Web site:** www.chemimpex.com

**Manufacturing site:**

825 Dillon Drive

Wood Dale, IL 60191

---



## Product Specifications

<b>Catalogue Number</b>	41401
<b>Product</b>	<b>(-)-Corey lactone</b> (3a <i>R</i> ,4 <i>S</i> ,5 <i>R</i> ,6a <i>S</i> )-(-)-Hexahydro-5-hydroxy-4-(hydroxymethyl)-2 <i>H</i> -
<b>CAS Number</b>	32233-40-2
<b>Molecular Formula</b>	C <sub>8</sub> H <sub>12</sub> O <sub>4</sub>
<b>Molecular Weight</b>	172.18

---

<b>Appearance</b>	White to off-white crystalline powder
<b>Melting Point</b>	114 - 118 °C
<b>Water Content (Karl Fisher)</b>	≤ 1%
<b>Related Substances</b>	Maximum single impurity : ≤ 1% (-) Isomer : ≤ 0.1%
<b>Residue On Ignition</b>	≤ 0.2%
<b>Purity by HPLC</b>	≥ 99%
<b>Storage</b>	Store at RT

**For Laboratory Use Only**