

Chem-Impex International, Inc.

Tel: (630) 766-2112

E-mail: sales@chemimpex.com

Shipping and Correspondence:

935 Dillon Drive

Wood Dale, IL 60191

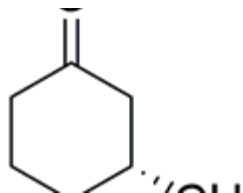
Fax: (630) 766-2218

Web site: www.chemimpex.com

Manufacturing site:

825 Dillon Drive

Wood Dale, IL 60191



Product Specifications

Catalogue Number	41375
Product	(R)-(+)-3-Methylcyclohexanone R-3-Methylcyclohexan-1-one
CAS Number	13368-65-5
Molecular Formula	C ₇ H ₁₂ O
Molecular Weight	112.17

Appearance	Colorless to yellow liquid
Optical Rotation	[α] _D ²⁰ = 12.5 - 14.5 °
Infrared Spectrum	Conforms to structure
Other Enantiomer	≤ 1.5%
Purity by GC	≥ 97.5%
Chiral Purity	≥ 98.5% (ee)
Storage	Store at RT

For Laboratory Use Only