

# Chem-Impex International, Inc.

---

**Tel:** (630) 766-2112

**E-mail:** sales@chemimpex.com

**Shipping and Correspondence:**

935 Dillon Drive

Wood Dale, IL 60191

**Fax:** (630) 766-2218

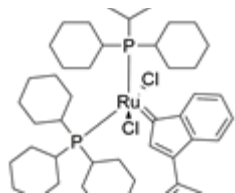
**Web site:** www.chemimpex.com

**Manufacturing site:**

825 Dillon Drive

Wood Dale, IL 60191

---



## Product Specifications

<b>Catalogue Number</b>	41262
<b>Product</b>	<b>(3-Phenyl-1H-inden-1-ylidene)</b> Grubbs catalyst® M1
<b>CAS Number</b>	250220-36-1
<b>Molecular Formula</b>	C <sub>51</sub> H <sub>76</sub> Cl <sub>2</sub> P <sub>2</sub> Ru
<b>Molecular Weight</b>	923.09

---

<b>Appearance</b>	Amber or brown crystalline powder
<b>Melting Point</b>	120 - 141 °C
<b>Assay by titration</b>	≥ 90%
<b>Storage</b>	Store at RT

**For Laboratory Use Only**