

Chem-Impex International, Inc.

Tel: (630) 766-2112

E-mail: sales@chemimpex.com

Shipping and Correspondence:

935 Dillon Drive

Wood Dale, IL 60191

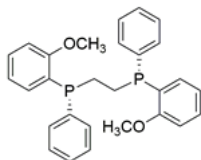
Fax: (630) 766-2218

Web site: www.chemimpex.com

Manufacturing site:

825 Dillon Drive

Wood Dale, IL 60191



Product Specifications

Catalogue Number	41162
Product	(R,R)-1,2-Bis[(2-methoxyphenyl) <i>(R,R)</i> -Ethylenebis[(2-methoxyphenyl)phenylphosphine] <i>(R,R)</i> -DIPAMP
CAS Number	55739-58-7
Molecular Formula	C ₂₈ H ₂₈ O ₂ P ₂
Molecular Weight	458.48

Appearance	White powder
Melting Point	102 - 106 °C
Optical Rotation	[α] ²⁰ _D = -83 ± 5 ° (C = 0.62 in CHCl ₃)
¹H NMR	Conforms to structure
³¹P NMR	Conforms to structure
Purity	≥ 98% (31P NMR)
Storage	Store at RT

For Laboratory Use Only