

Chem-Impex International, Inc.

Tel: (630) 766-2112

E-mail: sales@chemimpex.com

Shipping and Correspondence:

935 Dillon Drive

Wood Dale, IL 60191

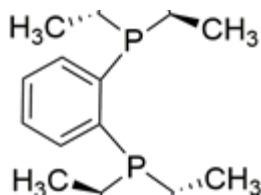
Fax: (630) 766-2218

Web site: www.chemimpex.com

Manufacturing site:

825 Dillon Drive

Wood Dale, IL 60191



Product Specifications

Catalogue Number	41150
Product	1,2-Bis[(2R,5R)-2,5-dimethylphospholano]benzene
	1,2-Bis[(2R,5R)-2,5-dimethylphospholan-1-yl]benzene (R,R)-Me-DUPHOS
CAS Number	147253-67-6
Molecular Formula	C ₁₈ H ₂₈ P ₂
Molecular Weight	306.37

Warnings	<i>Air sensitive! Store under inert gas!</i>
Appearance	White to off-white crystal
Melting Point	80 - 82 °C
Optical Rotation	[α] ²⁰ _D = -520 to -470 °
¹ H NMR	Conforms to structure
³¹ P NMR	Conforms to structure
Assay	≥ 97%
Storage	Store at RT

For Laboratory Use Only