

Chem-Impex International, Inc.

Tel: (630) 766-2112

E-mail: sales@chemimpex.com

Shipping and Correspondence:

935 Dillon Drive

Wood Dale, IL 60191

Fax: (630) 766-2218

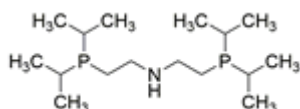
Web site: www.chemimpex.com

Manufacturing site:

825 Dillon Drive

Wood Dale, IL 60191

Product Specifications



Catalogue Number	41144
Product	Bis[2-(diisopropylphosphino)ethyl]amine (ca. Bis((2-diisopropylphosphino)ethyl)-amine (ca. 10% in Bis[(2-di-i-propylphosphino)ethyl]amine (ca. 10% in
CAS Number	131890-26-1
Molecular Formula	C ₁₆ H ₃₇ NP ₂
Molecular Weight	305.43

Appearance	Colorless to pale yellow liquid
¹H NMR	Conforms to structure
³¹P NMR	Conforms to structure
Purity	≥ 98% (31P NMR)
Storage	Store at RT

For Laboratory Use Only