

Chem-Impex International, Inc.

Tel: (630) 766-2112

E-mail: sales@chemimpex.com

Shipping and Correspondence:

935 Dillon Drive

Wood Dale, IL 60191

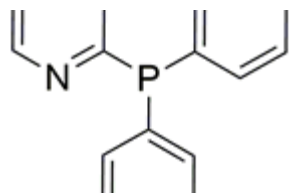
Fax: (630) 766-2218

Web site: www.chemimpex.com

Manufacturing site:

825 Dillon Drive

Wood Dale, IL 60191



Product Specifications

Catalogue Number	41101
Product	Diphenyl-2-pyridylphosphine 2-(Diphenylphosphino)pyridine
CAS Number	37943-90-1
Molecular Formula	C ₁₇ H ₁₄ NP
Molecular Weight	263.28

Appearance	White to off-white crystal
Solubility	Almost soluble in toluene
Melting Point	82 - 87 °C
Solvent	≤ 0.5%
¹H NMR	Conforms to structure
³¹P NMR	Conforms to structure
Purity	≥ 99% (NMR)
Storage	Store at RT

For Laboratory Use Only