

Chem-Impex International, Inc.

Tel: (630) 766-2112

E-mail: sales@chemimpex.com

Shipping and Correspondence:

935 Dillon Drive

Wood Dale, IL 60191

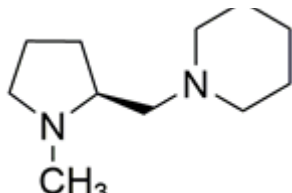
Fax: (630) 766-2218

Web site: www.chemimpex.com

Manufacturing site:

825 Dillon Drive

Wood Dale, IL 60191



Product Specifications

Catalogue Number	41089
Product	(S)-(-)-1-Methyl-2-(1-piperidinomethyl)pyrrolidine
CAS Number	(S)-(-)-1-[(1-Methyl-2-pyrrolidinyl)methyl]piperidine 84466-85-3
Molecular Formula	C ₁₁ H ₂₂ N ₂
Molecular Weight	182.31

Appearance	Yellow liquid
Optical Rotation	[α] _D ²⁰ = -71 to -67 ° (C = 0.5 in EtOH)
¹H NMR	Conforms to structure
Purity by GC	≥ 99.5%
GCMS	Conforms to standard
Storage	Store at 0-8 °C

For Laboratory Use Only