

Chem-Impex International, Inc.

Tel: (630) 766-2112

E-mail: sales@chemimpex.com

Shipping and Correspondence:

935 Dillon Drive

Wood Dale, IL 60191

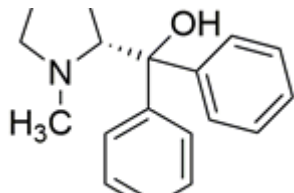
Fax: (630) 766-2218

Web site: www.chemimpex.com

Manufacturing site:

825 Dillon Drive

Wood Dale, IL 60191



Product Specifications

Catalogue Number	41085
Product	(R)-(-)-2-[Hydroxy(diphenyl)methyl]-1- (R)-(-)-Diphenyl(1-methylpyrrolidin-2-yl)methanol
CAS Number	144119-12-0
Molecular Formula	C ₁₈ H ₂₁ NO
Molecular Weight	267.37

Appearance	White to light yellow powder
Optical Rotation	[α] _D ²⁰ = -58 ± 1 °
¹H NMR	Conforms to structure
Chiral HPLC	≥ 99% (ee)
Other Enantiomer	≤ 1%
Purity by HPLC	≥ 99%
Storage	Store at RT

For Laboratory Use Only