

# Chem-Impex International, Inc.

---

**Tel:** (630) 766-2112

**E-mail:** sales@chemimpex.com

**Shipping and Correspondence:**

935 Dillon Drive

Wood Dale, IL 60191

**Fax:** (630) 766-2218

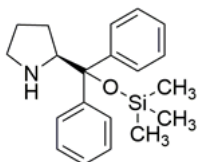
**Web site:** www.chemimpex.com

**Manufacturing site:**

825 Dillon Drive

Wood Dale, IL 60191

---



## Product Specifications

<b>Catalogue Number</b>	41077
<b>Product</b>	<b>(S)-(-)-<math>\alpha,\alpha</math>-Diphenyl-2-pyrrolidinemethanol</b> (S)-(-)-2-[Diphenyl(trimethylsilyloxy)methyl]pyrrolidine a, $\alpha$ -Diphenyl-L-prolinol Trimethylsilyl Ether
<b>CAS Number</b>	848821-58-9
<b>Molecular Formula</b>	C <sub>20</sub> H <sub>27</sub> NOSi
<b>Molecular Weight</b>	325.53

---

<b>Warnings</b>	<i>Air sensitive! Heat sensitive! Store under inert gas!</i>
<b>Synonym 3</b>	(S)-Hayashi-Jorgensen catalyst
<b>Appearance</b>	Pale yellow oil
<b>Optical Rotation</b>	$[\alpha]_D^{20} = -54$ to $-48^\circ$ (C = 1 in CHCl <sub>3</sub> )
<b><sup>1</sup>H NMR</b>	Conforms to structure
<b>Other Enantiomer</b>	≤ 0.5%
<b>Purity by GC</b>	≥ 98%
<b>Chiral Purity</b>	≥ 99.5% (ee)
<b>Storage</b>	Store at 2 - 8 °C

**For Laboratory Use Only**