

Chem-Impex International, Inc.

Tel: (630) 766-2112

E-mail: sales@chemimpex.com

Shipping and Correspondence:

935 Dillon Drive

Wood Dale, IL 60191

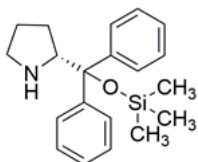
Fax: (630) 766-2218

Web site: www.chemimpex.com

Manufacturing site:

825 Dillon Drive

Wood Dale, IL 60191



Product Specifications

Catalogue Number	41076
Product	(R)-(+)-α,α-Diphenyl-2-pyrrolidinemethanol (R)-(+)-2-[Diphenyl(trimethylsilyloxy)methyl]pyrrolidine a, α -Diphenyl-D-prolinol Trimethylsilyl Ether
CAS Number	943757-71-9
Molecular Formula	C ₂₀ H ₂₇ NOSi
Molecular Weight	325.53

Warnings	<i>Heat sensitive!</i>
Synonym 3	(R)-Hayashi-Jorgensen catalyst
Appearance	Pale yellow oil
Optical Rotation	[α] _D ²⁰ = 48 - 54 ° (C = 1 in CHCl ₃)
¹H NMR	Conforms to structure
Other Enantiomer	≤ 0.5%
Purity by GC	≥ 98.5%
Chiral Purity	≥ 99.5% (ee)
Storage	Store at 2 - 8 °C

For Laboratory Use Only