

Chem-Impex International, Inc.

Tel: (630) 766-2112

E-mail: sales@chemimpex.com

Shipping and Correspondence:

935 Dillon Drive

Wood Dale, IL 60191

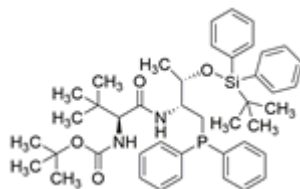
Fax: (630) 766-2218

Web site: www.chemimpex.com

Manufacturing site:

825 Dillon Drive

Wood Dale, IL 60191



Product Specifications

Catalogue Number	41046
Product	O-TBDPS-D-Thr-N-Boc-L-tert-Leu- <i>N</i> -(<i>tert</i> -Butoxycarbonyl)- <i>L</i> - <i>tert</i> -leucine <i>N</i> -[(2 <i>R</i> ,3 <i>S</i>)-3-(<i>tert</i> - <i>N</i> -Boc- <i>L</i> - <i>tert</i> -leucine <i>N</i> -[(2 <i>R</i> ,3 <i>S</i>)-3-(<i>tert</i> -butyldiphenylsilyloxy)-1-
CAS Number	1264520-63-9
Molecular Formula	C ₄₃ H ₅₇ N ₂ O ₄ PSi
Molecular Weight	725

Appearance	White to almost white powder to crystal
Elemental Analysis (Theory)	N = 3.6 - 4.0%
Optical Rotation	[α] ²⁰ _D = -29 to -26 ° (C = 1 in CHCl ₃)
Purity by HPLC	≥ 98%
Storage	Store at RT

For Laboratory Use Only