

# Chem-Impex International, Inc.

---

**Tel:** (630) 766-2112

**E-mail:** sales@chemimpex.com

**Shipping and Correspondence:**

935 Dillon Drive

Wood Dale, IL 60191

**Fax:** (630) 766-2218

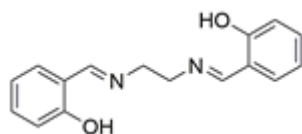
**Web site:** www.chemimpex.com

**Manufacturing site:**

825 Dillon Drive

Wood Dale, IL 60191

---



## Product Specifications

<b>Catalogue Number</b>	41044
<b>Product</b>	<b><i>N,N'</i>-Bis(salicylidene)ethylenediamine</b> <i>N,N'</i> -Bis(2-hydroxybenzylidene)ethylenediamine <i>N,N'</i> -Disalicylaethylenediamine
<b>CAS Number</b>	94-93-9
<b>Molecular Formula</b>	C <sub>16</sub> H <sub>16</sub> N <sub>2</sub> O <sub>2</sub>
<b>Molecular Weight</b>	268.32

---

<b>Appearance</b>	Pale yellow crystalline powder
<b>Solubility</b>	Almost transparency in hot methanol
<b>Melting Point</b>	126 - 128 °C
<b>Assay by titration</b>	≥ 99%
<b>Storage</b>	Store at RT

**For Laboratory Use Only**