

# Chem-Impex International, Inc.

---

**Tel:** (630) 766-2112

**E-mail:** sales@chemimpex.com

**Shipping and Correspondence:**

935 Dillon Drive

Wood Dale, IL 60191

**Fax:** (630) 766-2218

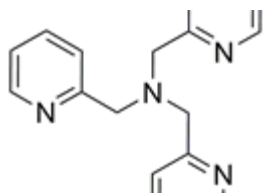
**Web site:** www.chemimpex.com

**Manufacturing site:**

825 Dillon Drive

Wood Dale, IL 60191

---



## Product Specifications

<b>Catalogue Number</b>	41032
<b>Product</b>	<b>Tris(2-pyridylmethyl)amine</b> Tripicolylamine Tri-(2-picolyl)amine
<b>CAS Number</b>	16858-01-8
<b>Molecular Formula</b>	C <sub>18</sub> H <sub>18</sub> N <sub>4</sub>
<b>Molecular Weight</b>	290.37

---

<b>Appearance</b>	Light brown solid
<b>Melting Point</b>	83 - 85 °C
<b><sup>1</sup>H NMR</b>	Conforms to structure
<b>Purity</b>	≥ 98% (NMR)
<b>Storage</b>	Store at RT

**For Laboratory Use Only**