

# Chem-Impex International, Inc.

---

**Tel:** (630) 766-2112

**E-mail:** sales@chemimpex.com

**Shipping and Correspondence:**

935 Dillon Drive

Wood Dale, IL 60191

**Fax:** (630) 766-2218

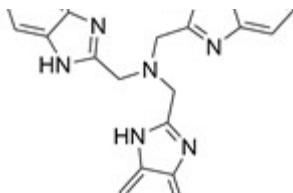
**Web site:** www.chemimpex.com

**Manufacturing site:**

825 Dillon Drive

Wood Dale, IL 60191

---



## Product Specifications

<b>Catalogue Number</b>	41015
<b>Product</b>	<b>Tris(2-benzimidazolylmethyl)amine</b>
	N,N-Bis(1H-benzimidazol-2-ylmethyl)-1H-benzimidazole-2-methanamine
	(BimH) <sub>3</sub>
<b>CAS Number</b>	64019-57-4
<b>Molecular Formula</b>	C <sub>24</sub> H <sub>21</sub> N <sub>7</sub>
<b>Molecular Weight</b>	407.48
<b>Appearance</b>	White to almost white crystal powder
<b>Assay by titration</b>	≥ 96%
<b>Purity by HPLC</b>	≥ 96%
<b>Storage</b>	Store at RT

---

**For Laboratory Use Only**