

Chem-Impex International, Inc.

Tel: (630) 766-2112

E-mail: sales@chemimpex.com

Shipping and Correspondence:

935 Dillon Drive

Wood Dale, IL 60191

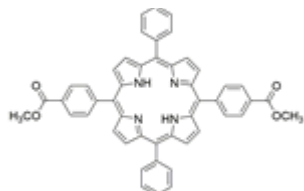
Fax: (630) 766-2218

Web site: www.chemimpex.com

Manufacturing site:

825 Dillon Drive

Wood Dale, IL 60191



Product Specifications

Catalogue Number	41008
Product	5,10,15,20-Tetrakis(4-methoxycarbonylphenyl) meso-Tetra(4-carboxyphenyl)porphine Tetramethyl Ester Tetramethyl 4,4',4'',4'''-(5,10,15,20-porphyrinetetrayl)tetrabenzoate
CAS Number	22112-83-0
Molecular Formula	C ₅₂ H ₃₈ N ₄ O ₈
Molecular Weight	846.9

Appearance	Purple solid
Solubility	Soluble in DCM, Insoluble in water
UV Ratios	In CD ₂ Cl ₂ 419 ± 1 nm, 484 ± 1 nm, 515 ± 1 nm, 549 ± 1 nm, 589 ± 1 nm, 649 ± 1 nm
Purity by HPLC	≥ 95%
Storage	Store at RT

For Laboratory Use Only