

Chem-Impex International, Inc.

Tel: (630) 766-2112

E-mail: sales@chemimpex.com

Shipping and Correspondence:

935 Dillon Drive

Wood Dale, IL 60191

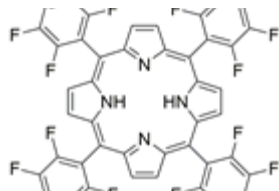
Fax: (630) 766-2218

Web site: www.chemimpex.com

Manufacturing site:

825 Dillon Drive

Wood Dale, IL 60191



Product Specifications

Catalogue Number	41005
Product	5,10,15,20-Tetrakis(pentafluorophenyl) 5,10,15,20-Tetrakis(perfluorophenyl)porphyrin 5,10,15,20-Tetrakis(pentafluorophenyl)-21 <i>H</i> ,23 <i>H</i> -porphine
CAS Number	25440-14-6
Molecular Formula	C ₄₄ H ₁₀ F ₂₀ N ₄
Molecular Weight	974.56

Appearance	Purple solid
Analysis by Mass Spectra	Conforms to standard
UV Ratios	Spectrum profile range : 350 - 800 nm
¹H NMR	Conforms to structure
Purity by HPLC	≥ 98%
Storage	Store at RT

For Laboratory Use Only