

# Chem-Impex International, Inc.

Tel: (630) 766-2112

E-mail: sales@chemimpex.com

Shipping and Correspondence:

935 Dillon Drive

Wood Dale, IL 60191

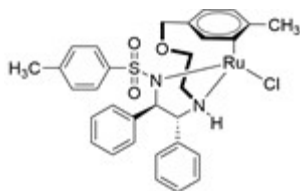
Fax: (630) 766-2218

Web site: www.chemimpex.com

Manufacturing site:

825 Dillon Drive

Wood Dale, IL 60191



## Product Specifications

Catalogue Number	40813
Product	<b>Chloro[(S,S)-N-[2-[2-(4-methylbenzyloxy)ethyl]amino]-1,2-diphenylethyl]-p-toluenesulfonamide]ruthenium(II)</b>
	Chloro[(S,S)-N-[2-(4-methylbenzyloxy)ethyl]-N'-(p-toluenesulfonyl)-1,2-diphenylethylenediamine]ruthenium(II)
CAS Number	1384974-37-1
Molecular Formula	C <sub>31</sub> H <sub>33</sub> ClN <sub>2</sub> O <sub>3</sub> RuS
Molecular Weight	650.2
Appearance	Gray to brown solid
Water Content (Karl Fisher)	≤ 1%
Residual Solvents	3-MEO-1-Propanol : ≤ 3% Methyl isobutyl ketone (MIBK) : ≤ 1% Heptane : ≤ 1%
<sup>1</sup> H NMR	Conforms to structure
Assay	Ru : 13 - 17%
Storage	Store at RT

**For Laboratory Use Only**