

Chem-Impex International, Inc.

Tel: (630) 766-2112

E-mail: sales@chemimpex.com

Shipping and Correspondence:

935 Dillon Drive

Wood Dale, IL 60191

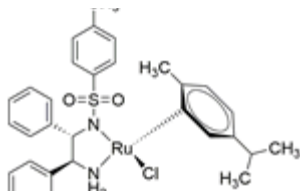
Fax: (630) 766-2218

Web site: www.chemimpex.com

Manufacturing site:

825 Dillon Drive

Wood Dale, IL 60191



Product Specifications

Catalogue Number	40810
Product	RuCl[(S,S)-Tsdpen](p-cymene) [(S,S)-N-(2-Amino-1,2-diphenylethyl)-p-toluenesulfonamide] Chloro(p-cymene)[(S,S)-N-(p-toluenesulfonyl)-1,2-
CAS Number	192139-90-5
Molecular Formula	C ₃₁ H ₃₅ ClN ₂ O ₂ RuS
Molecular Weight	636.21

Appearance	Yellow to dark brown powder
Assay	≥ 90%
Storage	Store at 2 - 8 °C

For Laboratory Use Only