

Chem-Impex International, Inc.

Tel: (630) 766-2112

E-mail: sales@chemimpex.com

Shipping and Correspondence:

935 Dillon Drive

Wood Dale, IL 60191

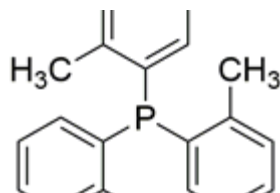
Fax: (630) 766-2218

Web site: www.chemimpex.com

Manufacturing site:

825 Dillon Drive

Wood Dale, IL 60191



Product Specifications

Catalogue Number	40743
Product	Tri(o-tolyl)phosphine Tris(2-methylphenyl)phosphine
CAS Number	6163-58-2
Molecular Formula	C ₂₁ H ₂₁ P
Molecular Weight	304.37

Appearance	White solid
Melting Point	127 - 129 °C
¹H NMR	Conforms to structure
Purity	≥ 98% (NMR)
Storage	Store at RT

For Laboratory Use Only