

Chem-Impex International, Inc.

Tel: (630) 766-2112

E-mail: sales@chemimpex.com

Shipping and Correspondence:

935 Dillon Drive

Wood Dale, IL 60191

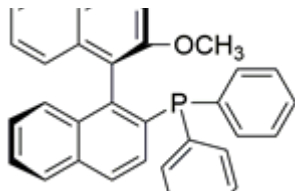
Fax: (630) 766-2218

Web site: www.chemimpex.com

Manufacturing site:

825 Dillon Drive

Wood Dale, IL 60191



Product Specifications

Catalogue Number	40733
Product	(R)-(+)-2-Diphenylphosphino-2'-methoxy-1,1'- (R)-(+)-2-(Diphenylphosphino)-2'-methoxy-1,1'-binaphthyl (R)-(+)-MOP
CAS Number	145964-33-6
Molecular Formula	C ₃₃ H ₂₅ OP
Molecular Weight	468.54

Appearance	White to light yellow powder or crystal
Solubility	Almost soluble in toluene
Melting Point	191 - 193 °C
Optical Rotation	[α] ²⁰ _D = 91 - 98 ° (C = 0.3 in CHCl ₃)
Solvent	≤ 0.5%
¹H NMR	Conforms to structure
³¹P NMR	Conforms to structure
Purity by HPLC	≥ 99%
Storage	Store at RT

For Laboratory Use Only